

NAME

# THINK living color fundraiser SPRING

PHONE NUMBER

ALL FLOWERS & VEGETABLES WILL DELIVER TO YOUR GROUP'S  
LOCATION BETWEEN 5/15-5/28

ALL PRODUCT 100% GUARANTEED  
PLANT PRODUCT MAY DIFFER SLIGHTLY FROM IMAGES  
WWW.LIVINGCOLORFUNDRAISER.COM

Make Checks to:

## TEKONSHA ATHLETIC BOOSTERS

Orders  
Due:  
March  
24th

Delivery  
Around  
Mother's  
Day

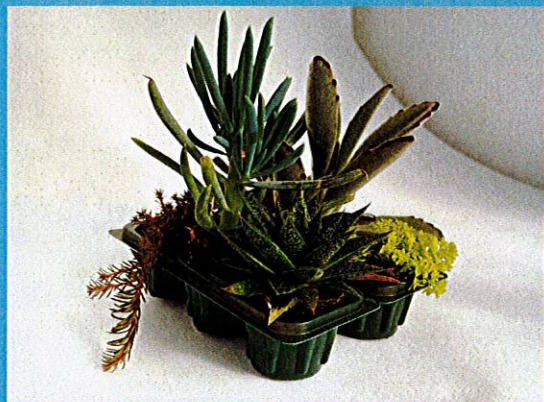
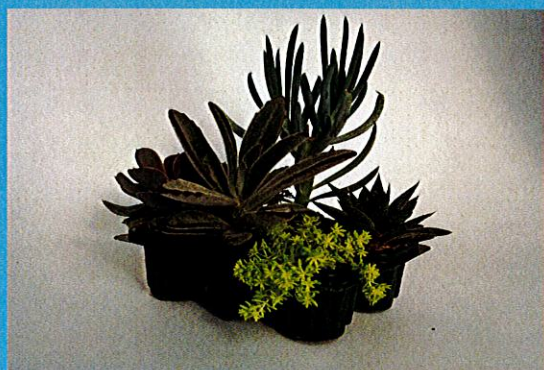
### FLOWER & PLANT FUNDRAISER

WAVE® PETUNIAS · SUCCULENT CEDAR FRAMES · HERBS & VEGETABLES · LANDSCAPE FLATS · HANGING BASKETS · COLOR BOWLS

#### SUCCULENT COMBO 6-PACK

☼ JUNE - FROST ☼ FULL SUN / PART SHADE

This 6-Pack comes filled with a variety of Succulents.



#### EASY WAVE PETUNIA 6-PACKS



Waves create a lush carpet of vivid color in any large container or flower bed.



BLUE WAVE®

☼ MAY - FROST ☼ FULL SUN / PART SHADE



RED WAVE®

☼ MAY - FROST ☼ FULL SUN / PART SHADE



ROSE DAWN WAVE®

☼ MAY - FROST ☼ FULL SUN / PART SHADE

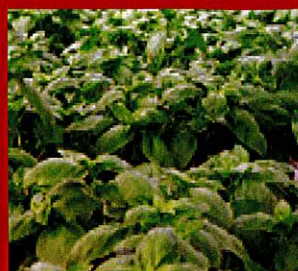


Starting a vegetable & herb garden at home is a fantastic way to save money – a single tomato plant can easily provide 10 pounds of fruit over the summer.

Plus, growing vegetables is **FUN!** It's a great way to spend time with your kids and friends or have a place to get away and spend valuable time outside in the sun.

# VEGETABLE & HERB

## 6-PACKS



**SWEET BASIL**  
☞ JUNE-AUGUST ☼ FULL SUN / PART SHADE



**OREGANO**  
☞ JUNE-AUGUST ☼ FULL SUN / PART SHADE



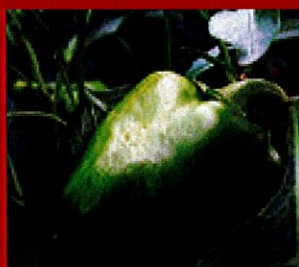
**ROSEMARY**  
☞ JUNE-AUGUST ☼ FULL SUN / PART SHADE



**THYME**  
☞ JUNE-AUGUST ☼ FULL SUN / PART SHADE



**CHERRY TOMATO**  
☞ AUGUST ☼ FULL SUN / PART SHADE



**BELL PEPPER**  
☞ AUGUST ☼ FULL SUN / PART SHADE



**JALAPENO PEPPER**  
☞ AUGUST ☼ FULL SUN / PART SHADE



**TOMATO**  
☞ AUGUST ☼ FULL SUN / PART SHADE

# LANDSCAPE FLAT<sub>36-PACKS</sub>

Fill your beds and containers with beautiful, vibrant plants. Choose from a selection of favorites that are fun to plant and grow!



**BEGONIA (GREEN-LEAF) MIX**  
☞ JUNE-FROST ☼ SHADE



**BEGONIA (BRONZE-LEAF) MIX**  
☞ JUNE-FROST ☼ SHADE



**BLUE CHILL PANSY**  
☞ MAY-JUNE ☼ FULL SUN / PART SHADE



**RASPBERRY DIANTHUS**  
☞ APRIL-FROST ☼ FULL SUN / PART SHADE



**DUSTY MILLER**  
☞ JUNE-FROST ☼ FULL SUN / PART SHADE



**IMPATIENS MIX**  
☞ JUNE-FROST ☼ SHADE / PART SHADE



**MARIGOLD MIX**  
☞ JUNE-FROST ☼ FULL SUN



**PETUNIA MIX**  
☞ MAY-FROST ☼ FULL SUN / PART SHADE



**RED SALVIA**  
☞ MAY-SEPTEMBER ☼ FULL SUN



**SNAPDRAGON MIX**  
☞ APRIL-FROST ☼ PART SHADE



# 12" HANGING BASKETS

They are beautiful, last longer than cut flowers, and are a great way to kick off the gardening season.



**EVENING DELIGHT MIX**  
 \* JUNE-FROST \* FULL SUN / PART SHADE



**PRIMARY PALETTE MIX**  
 \* JUNE-FROST \* FULL SUN / PART SHADE



**HULA PINK BEGONIA**  
 \* JUNE-FROST \* PART SHADE / SHADE



**JAMBALAYA**  
 \* MAY-FROST \* FULL SUN / PART SHADE



**HULA RED BEGONIA**  
 \* JUNE-FROST \* PART SHADE / SHADE



**PINK GERANIUM + VINCA**  
 \* FREELY \* FULL SUN / PART SHADE



**IMPATIENS MIX**  
 \* JUNE-FROST \* SHADE



**RED GERANIUM + VINCA**  
 \* FREELY \* FULL SUN / PART SHADE



**VIOLET GERANIUM + VINCA**  
 \* FREELY \* FULL SUN / PART SHADE



**RWB PETUNIA MIX**  
 \* MAY-FROST \* FULL SUN / PART SHADE

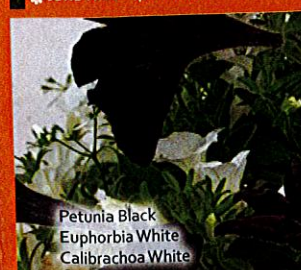
# 11" COLOR BOWLS

Color Bowls hold 7-8 plants and are pot inserts that fit into an existing container.

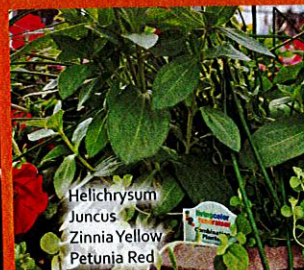
Color Bowls are 11" by 4" and fit snugly into a 12" or larger patio container.



**CHOICE FLAMBEAU**  
 \* JUNE-FROST \* FULL SUN



**LORI'S MIDNIGHT MIX**  
 \* JUNE-FROST \* FULL SUN / PART SHADE



**SERENDIPITY SHIFT**  
 \* JUNE-FROST \* FULL SUN



**ZENITH DESIGN**  
 \* JUNE-FROST \* PART SHADE / SHADE



**MOSAIC**  
 \* JUNE-FROST \* PART SHADE / SHADE



NAME  
PHONE NUMBER

please include your name & phone number,  
so we can let you know when your plants arrive

CUSTOMER  
ONE

CUSTOMER  
TWO

CUSTOMER  
THREE

CUSTOMER  
FOUR

**\$14.00**

Succulent Combo

**WAVE® PETUNIAS**

Blue Wave® Petunia

**\$12.50**

Red Wave® Petunia

Rose Dawn Wave® Petunia

**VEGETABLES &  
HERBS**

**\$11.00**

Sweet Basil

Oregano

Rosemary

Thyme

Cherry Tomato

Bell Pepper

Jalapeno Pepper

Tomato

**LANDSCAPE FLATS**

**\$16.50**

Begonia Green Leaf Mix

Begonia Bronze Leaf Mix

Blue Chill Pansy

Raspberry Dianthus

Dusty Miller

Impatiens Mix

Marigold Mix

Petunia Mix

Red Salvia

Snapdragon Mix

**HANGING BASKETS**

**\$18.50**

Evening Delight Mix

Primary Palette Mix

Jambalaya

Hula Pink Begonia

Hula Red Begonia

Impatiens Mix

Pink Geranium w/Vinca

Red Geranium w/Vinca

Violet Geranium w/Vinca

Red White Blue Petunia Mix

**COLOR BOWLS**

**\$18.50**

Choice Flambeau

Lori's Midnight Mix

Mosaic

Serendipity Shift

Zenith Design

**TOTALS**